

FINE. PIXEL. GENERATION.

Integrated Matrix Device (IMD) Packaging

4-in-1 Pixel Installation

Common Cathode Technology

improves brightness with better heat dissipation

Convenient Maintenance & Installation

featuring improved PCB pad and cable-free connector for easy maintenance & install

+2.5 concave

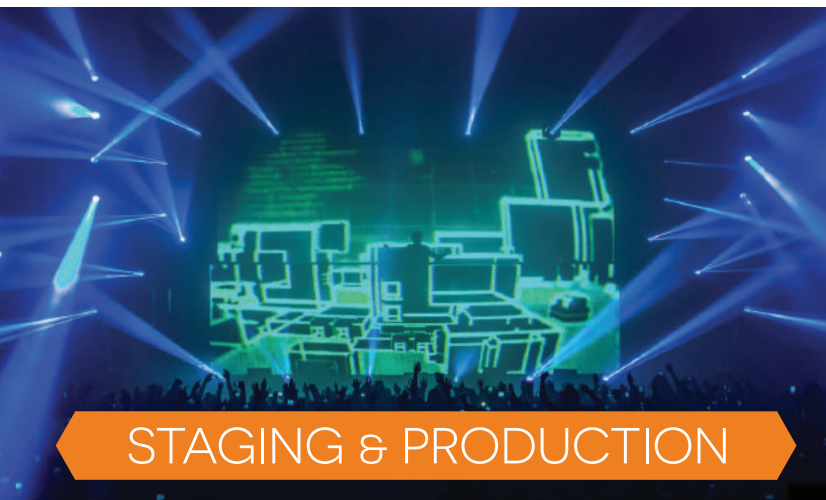
CURVABILITY

3840 Hz

REFRESH RATE

14 bit

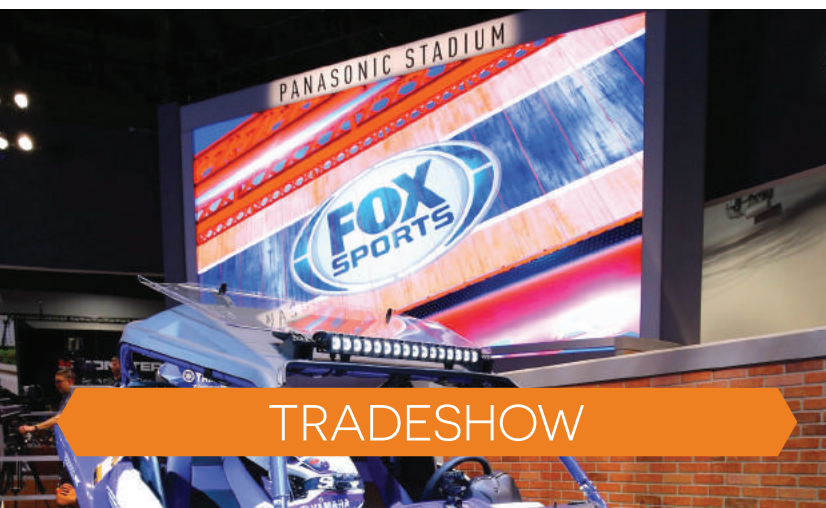
GRAYSCALE



STAGING & PRODUCTION



CONCERT & TOURING

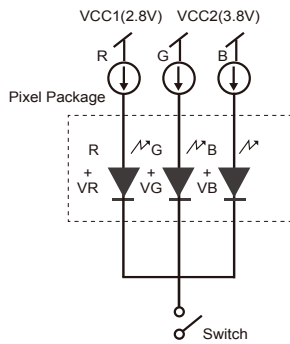


TRADESHOW



EVENTS

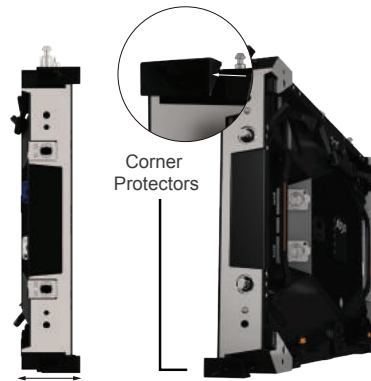
Absen Common Cathode Technology



- ✓ RGB separate power supply
- ✓ No external resistors
- ✓ High precision voltage control
- ✓ Low heat dissipation
- ✓ Lower power consumption
- ✓ Higher LED lifespan and uniformity
- ✓ Lower colour shift at low brightness
- ✓ Lower pixel and circuit failure

Protection Features Design

4 corner edge protection

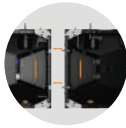


Auto-Lock and Auto-Eject Systems

for fast and easy 1-person installation with ultimate safety and pixel protection



Auto-locking vertical lock system with magnetic auto-connection



Auto-ejection side lock system enables super fast, east and convenient disconnection of panels.



Multiple Installation Methods



Hanging System



Stacking System

SPECIFICATIONS	AX 1.2	AX 1.5
PIXEL PITCH	1.27 mm	1.58 mm
LED TYPE	IMD COMMON CATHODE 4-IN-1	
PANEL SIZE (WxHxD)	24" x 13.5" x 3.1" 610 x 343 x 80mm	
CABINET MATERIAL	Die Cast Aluminum	
PANEL WEIGHT	17.2 lb / 7.8 kg	
PIXEL MATRIX PER PANEL (WxH)	480x270	384 x 216
IP RATING (FRONT/REAR)	IP40/IP21	
VIEWING ANGLE (H/V)	160° / 140°	
BRIGHTNESS	600 nits	800 nits
REFRESH RATE	up to 3840 Hz	
GRAYSCALE	14 bit	
CERTIFICATIONS	TUV-CE, ETL, FCC	

**All Specifications are subject to change without notice.*

Absen

7120 Lake Ellenor Dr
Orlando, FL 32809

Contact Us

407.203.8870

sales@usabsen.com

www.usabsen.com

East Service Center

7307 Presidents Drive, Orlando, FL 32809

West Service Center & Showroom

3550 E. Philadelphia St. Suite 120, Ontario, CA 91761

V.3160.a